

Colorado State Patrol - Fact Sheet



Mission

The mission of the Colorado State Patrol is to ensure a safe and secure environment for all persons by utilizing the strengths of our members to provide professional law enforcement services that reflect our Core Values of Honor, Duty and Respect.

Vision

Through unwavering professionalism and loyal adherence to our Core Values, the Colorado State Patrol will be a leader in public safety. We will advance our profession as we safeguard life and property throughout Colorado.

CSP at a Glance



1,168 Members



5 Aircraft



787 Motor Vehicles



8 K-9s



2 Bomb Detection Dogs



9 Ports of Entry



6 Communication Centers



5 Districts



23,000+ Lane Miles of State Highways

CALEA TRI-ARC Award Recipient

The Colorado State Patrol has been law enforcement accredited by The Commission on Accreditation for Law Enforcement Agencies, Inc. since March 2015 and earned its second TRI-ARC certification in March 2022.



Additional Services Provided:

- Aircraft Services
- Executive Security
- Community Education
- Hazardous Materials
- Investigative Services
- Motor Carrier Safety
- Motorcycle Operations
- Records Retention and Release
- Smuggling, Trafficking and Interdiction
- Special Events Permitting
- Vehicular Crimes
- Victim Services

Core Values

Honor

The essence of a person's veritable integrity based on the representation of moral character and ethical actions.

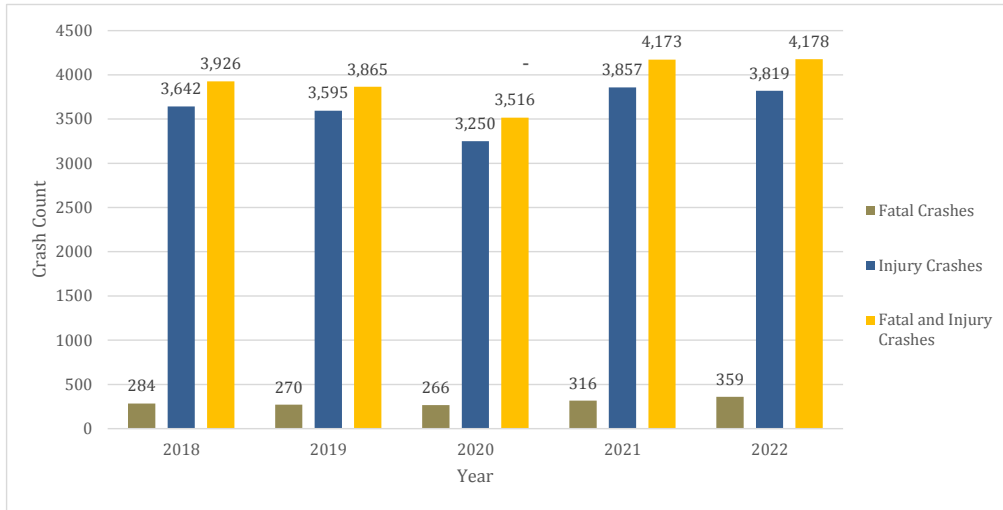
Duty

Dedication of moral commitment to a mission that involves sacrifice of immediate self-interest for the betterment of public safety in Colorado.

Respect

Conduct in accordance with honorable actions that reflect the highest regard for mission, self and others.

2022 By the Numbers - CSP Investigated Fatal and Injury Crashes



Colorado State Patrol Chief



Col. Matthew C. Packard, Chief

2022 Top Five Causal Factors

CY 2018 – CY 2022 Fatal and Injury Crashes (Investigated by CSP Troopers) ACF		
Accident Causal Factor	CY 2022	
	Crashes	% of total
Inattentive to Driving	610	14.66%
Exceeding Safe/Legal Speed	635	15.14%
DUI/DUID Caused	665	15.65%
Lane Violations	631	15.14%
Failure to Yield Right of Way	364	8.82%
All ACFs not above	1,269	30.58%
Total Fatal and Injury Crashes	4,174	

Colorado State Patrol Headquarters
700 Kipling St., Lakewood, CO 80215
303.239.4500 (8 a.m. - 5 p.m. M-F)



Connect with us:
csp.colorado.gov

