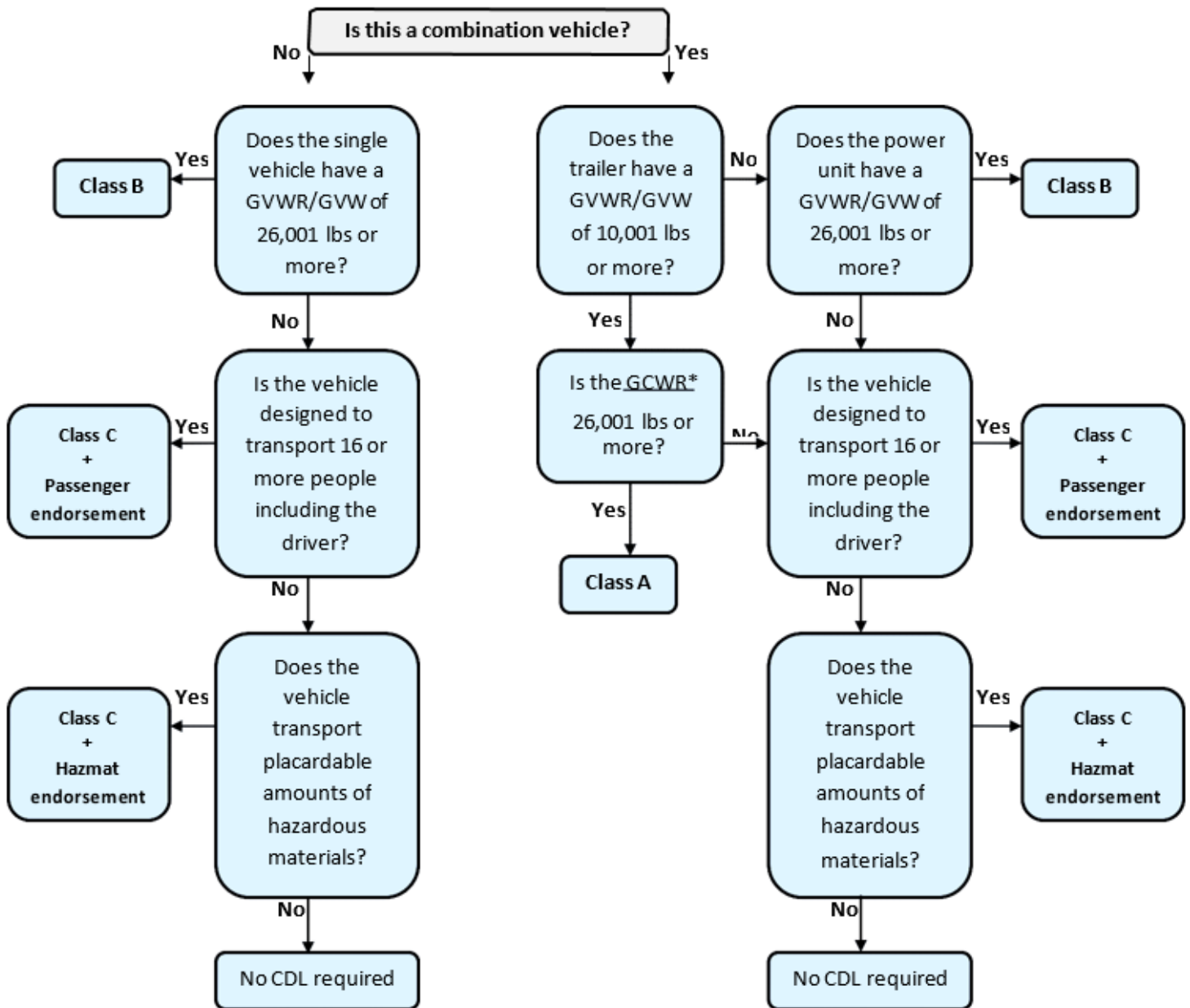


# COMMERCIAL DRIVER'S LICENSE (CDL):

## CDL FLOWCHART



### 42-2-402 CDL Exceptions

"Commercial motor vehicle" does not include:

- (I) **Recreational vehicles;**
- (II) **Military vehicles that are driven by military personnel;**
- (III) **Any farm vehicles:**
  - (A) Controlled and operated by a farmer; (B) Used to transport agriculture products, farm machinery, or farm supplies to or from a farm; (C) Not used in the operations of a common or contract motor carrier; or (D) Used within one hundred fifty miles of the person's farm;
- (IV) **Firefighting equipment.**

### 390.39 Exemptions for "Covered Farm Vehicle"

- (I) Drivers of vehicles meeting the definition of "Covered Farm Vehicle" are not required to have CDLs

\*Gross combination weight rating(GCWR) is the greater of:

- (1) A value specified by the manufacturer of the power unit, if such value is displayed on the Federal Motor Vehicle Safety Standard (FMVSS) certification label required by the National Highway Traffic Safety Administration,
- or
- (2) The sum of the gross vehicle weight ratings (GVWRs) or the gross vehicle weights (GVWs) of the power unit and the towed unit(s), or any combination thereof, that produces the highest value. Exception: The GCWR of the power unit will not be used to define a commercial motor vehicle when the power unit is not towing another vehicle.